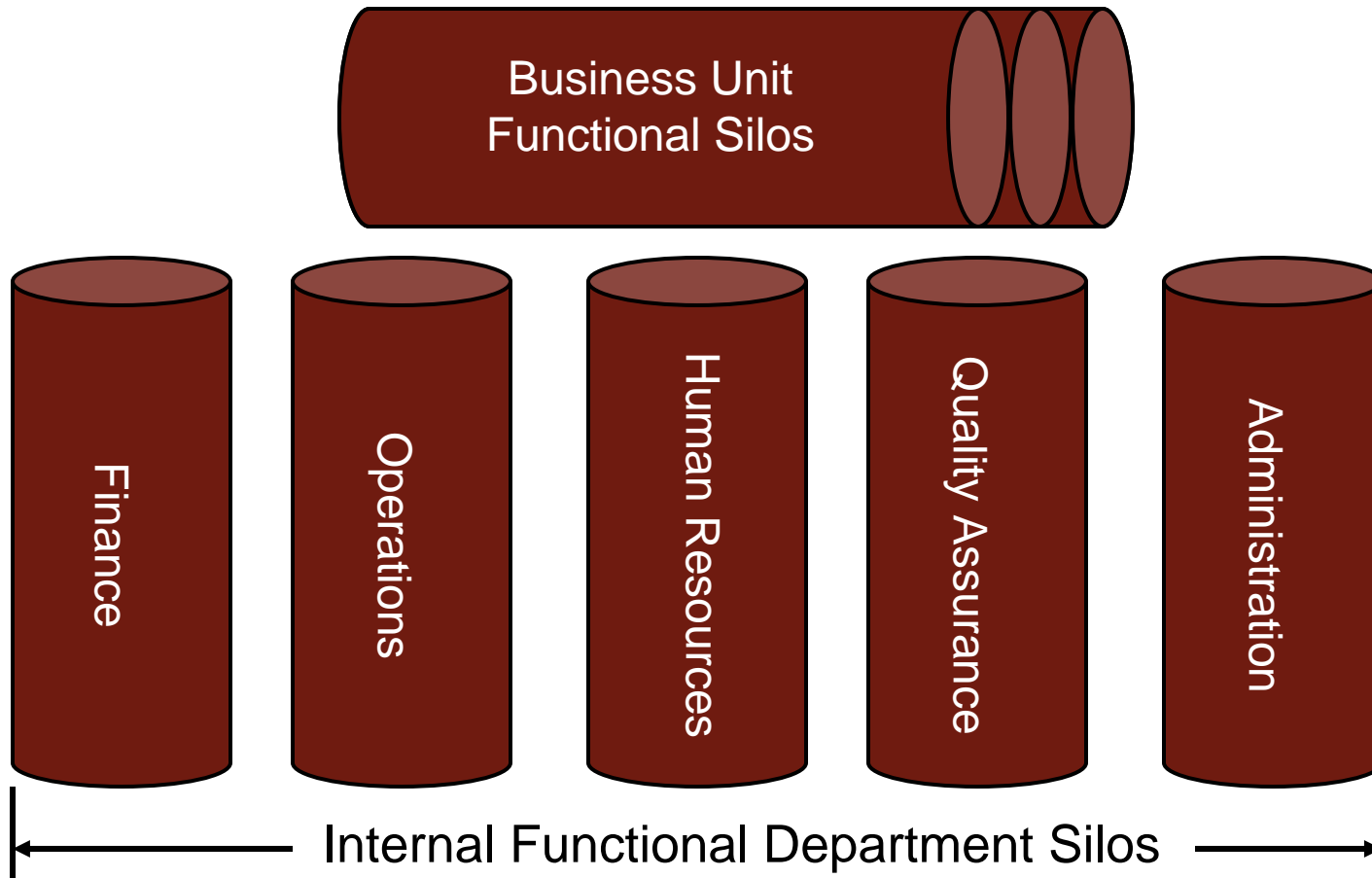


AppBuilder Tool Suite Product Overview



9801 Westheimer Suite 302
Houston, TX 77042
281-385-9025
mrockwell@rockwellits.com
<http://www.rockwellits.com>

Typical Enterprise Application Integration Problem

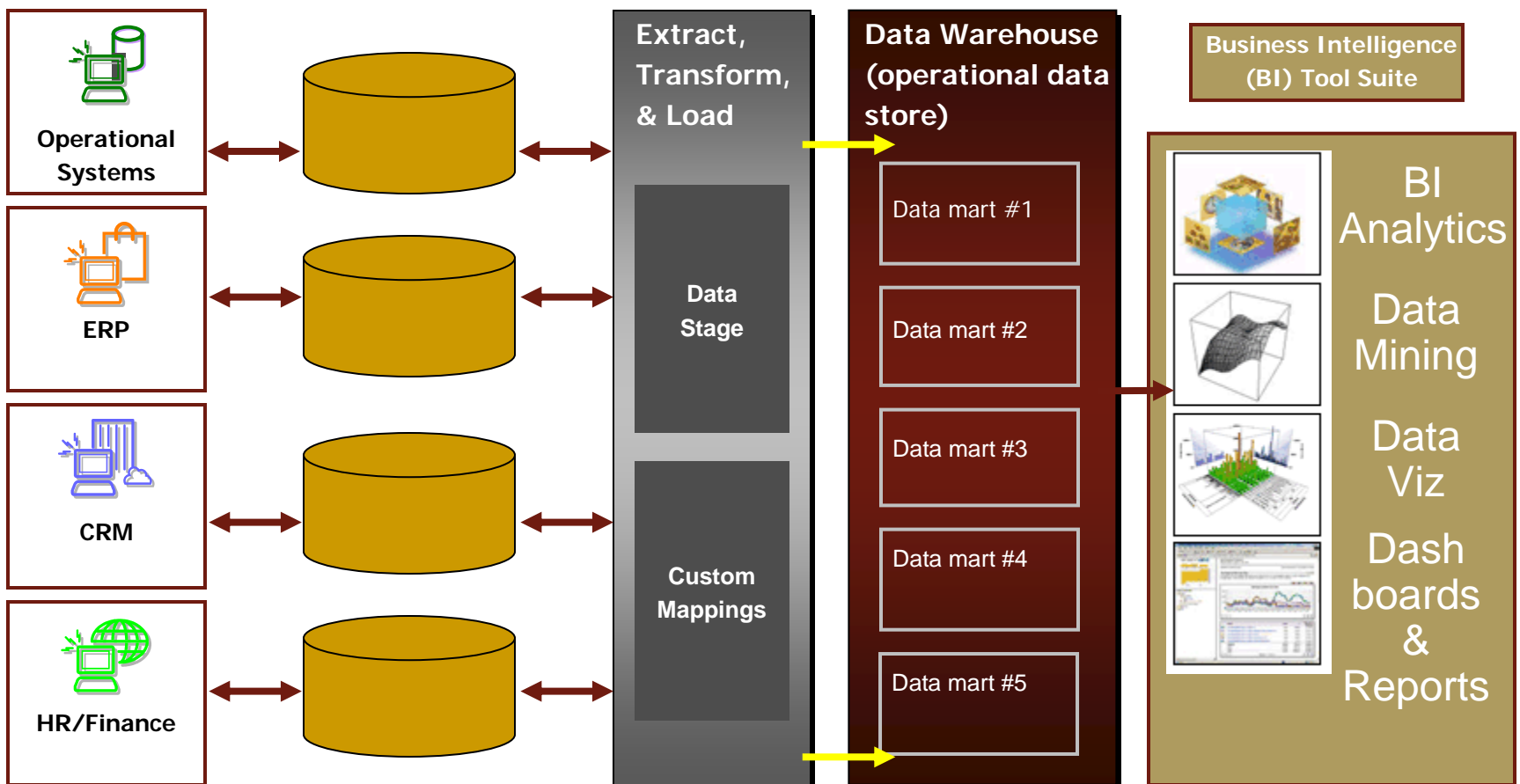


AppBuilder Business Case

“Do you have the right information to run the business?”

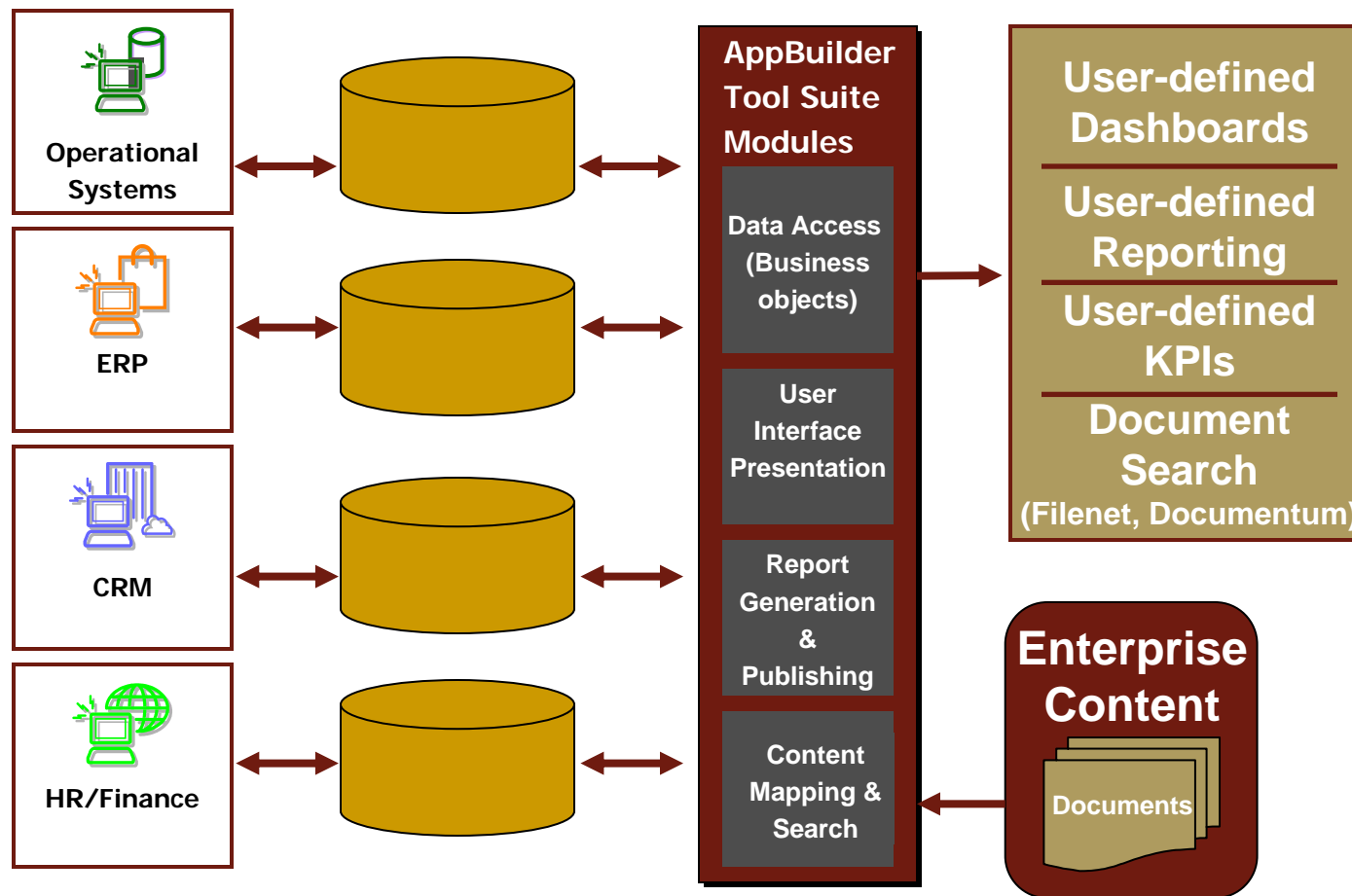
**64% of CIO's
said NO**

Data Warehouse Platform Typical Enterprise Solution (Expensive to Deploy and Maintain)



AppBuilder Enterprise Solution

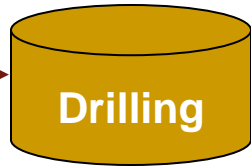
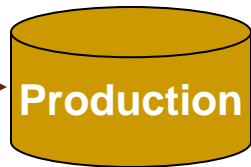
Cost Effective Data Integration



AppBuilder Enterprise Solution

Oil & Gas Industry Example

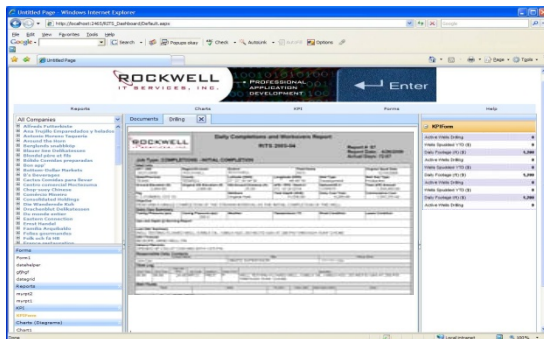
Windows Desktop



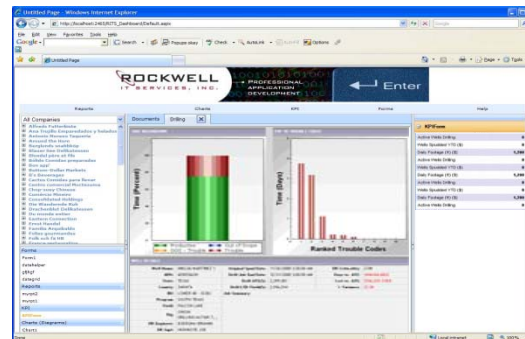
Web Browser



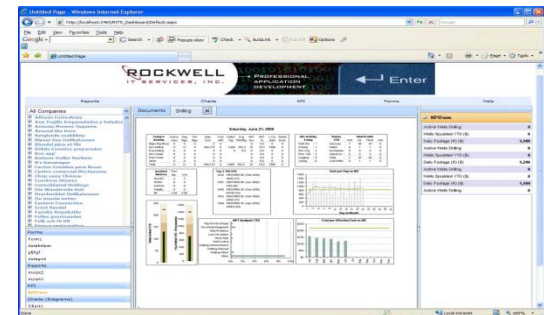
Web Reporting



Web Drilling Dashboards



Web Production Dashboards

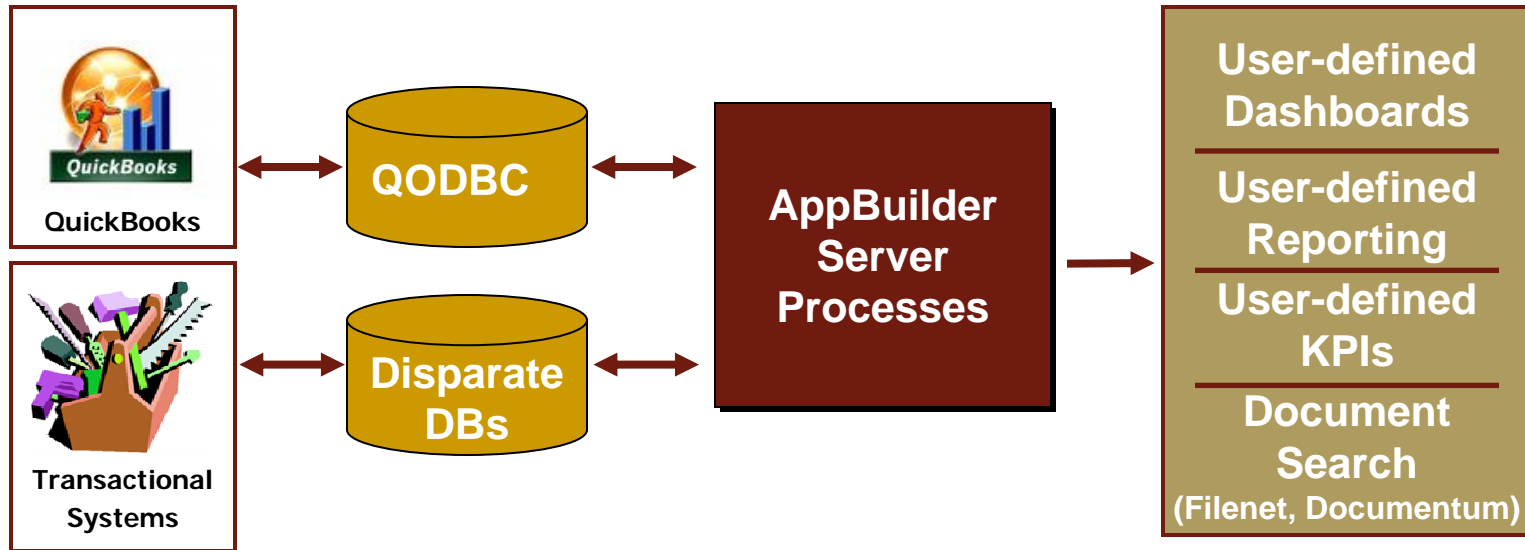


AppBuilder Enterprise Solution

Small Business Example

Windows Desktop

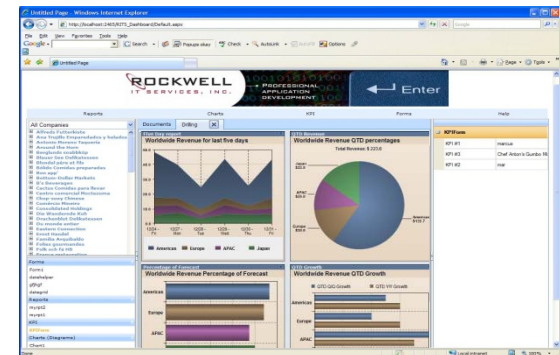
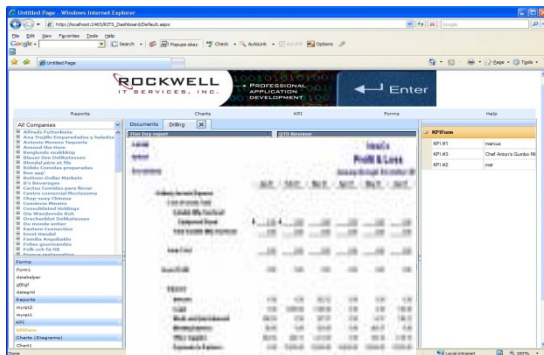
Web Browser



Custom Reporting

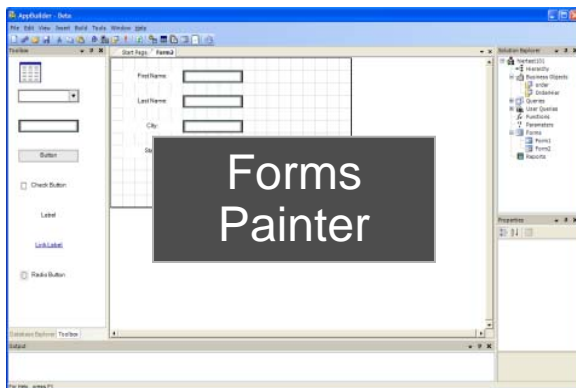
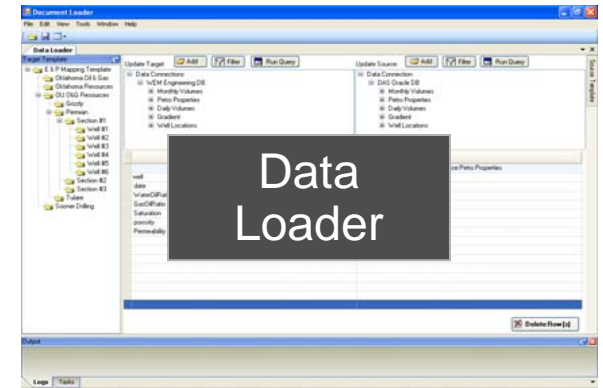
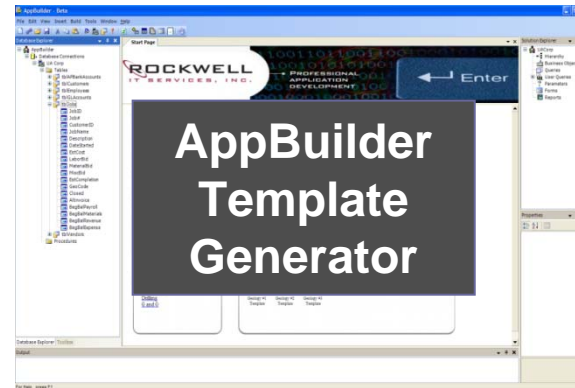
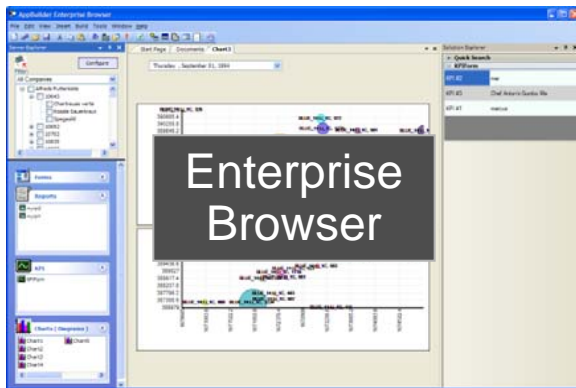
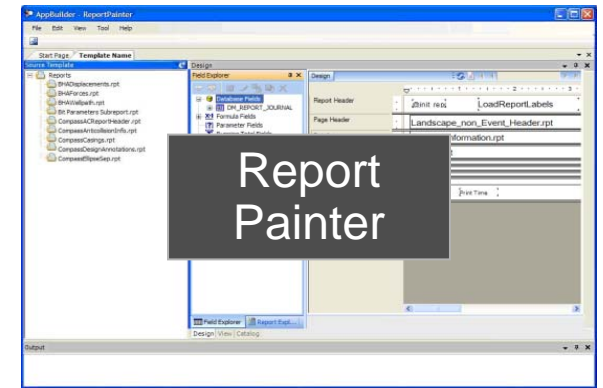
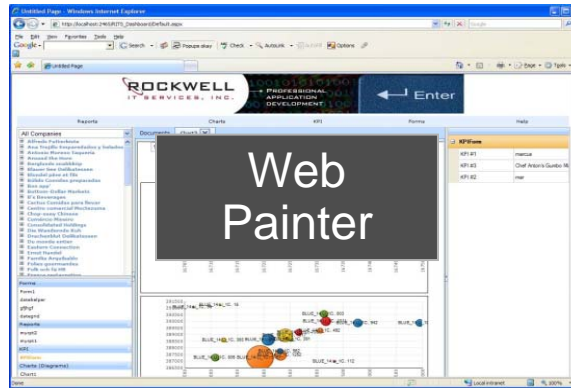
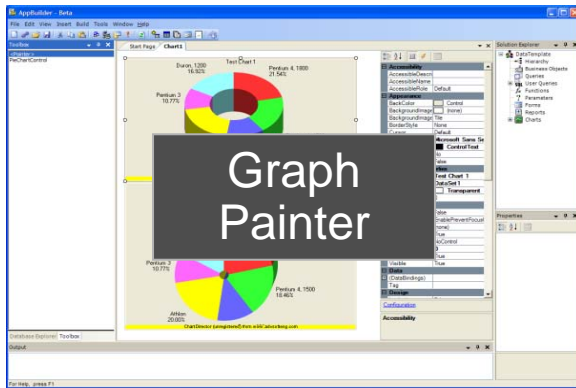
Sales & Marketing

Financial

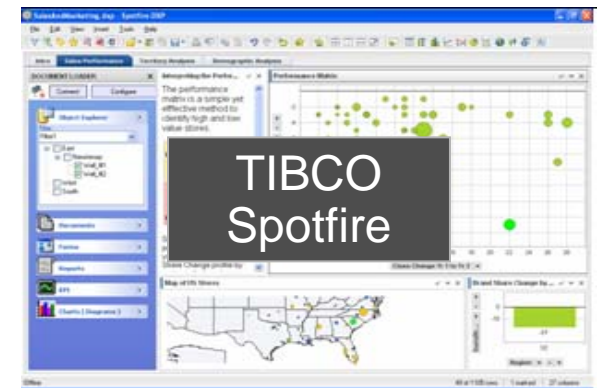


AppBuilder Value Proposition

- **Access to multiple databases**
Data is accessed from wherever it resides on the network without requiring the time-consuming and technically-intensive work of first copying the data to a new location. This allows asset teams to quickly retrieve large amounts of information from various data sources in real time.
- **Improved Workflow Efficiency**
Reduces decision-making cycle time and adds value for technical teams through interactive dashboards, reports and ready access to relevant documents.
- **Flexibility / Adaptable to Change**
Able to quickly change or add new dashboards, reports, and Key Performance Indicators to support rapidly changing business requirements. AppBuilder can be tailored to provide a custom fit to the way any organization does business
- **Cost-effective implementation**
AppBuilder provides standard templates that can be customized or allows users to create their own templates from scratch. These templates can be deployed in days and weeks, rather than months, and require little to no training to use.
- **Bridging the data and document divide**
Providing business users with a contextual framework which allows them to link enterprise data to enterprise content



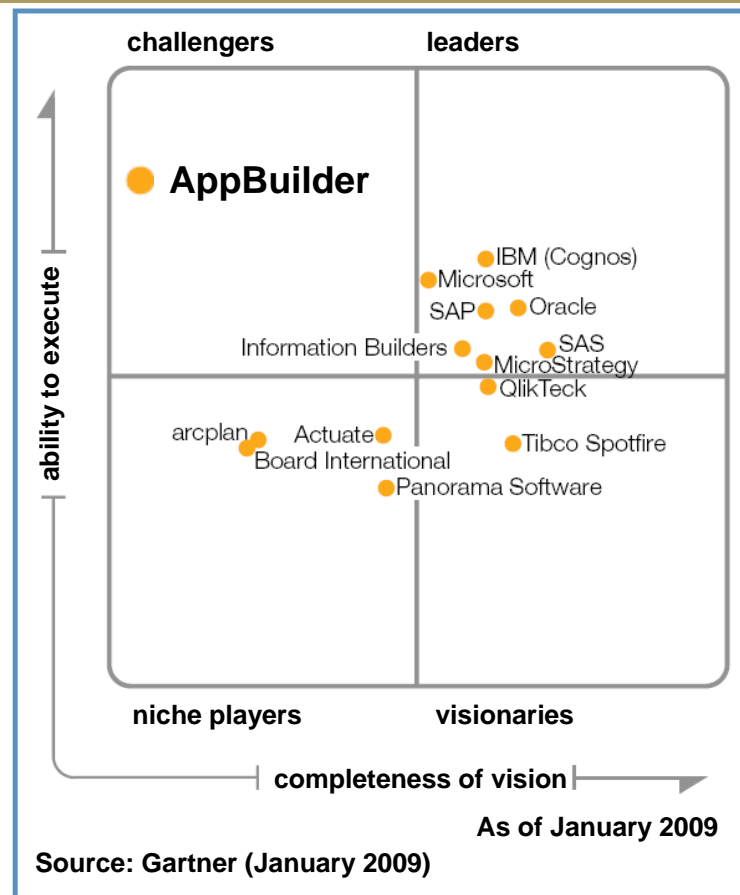
User Defined:
 Maps
 Alerts
 Search
 Reporting
 Server



Business Intelligence Players

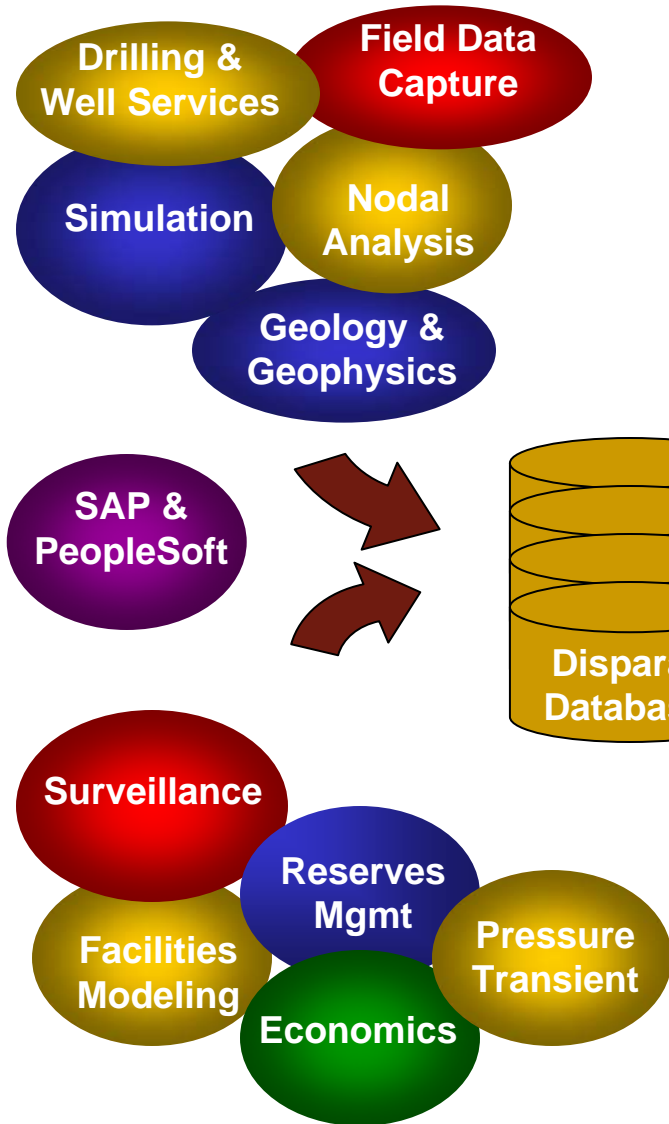
The AppBuilder Advantage:

- ◆ Our specialty is “in situ” integration of disparate data stores by providing enterprise access to the data contained in these repositories
- ◆ Our unique position as a niche player with a very high ability to execute.

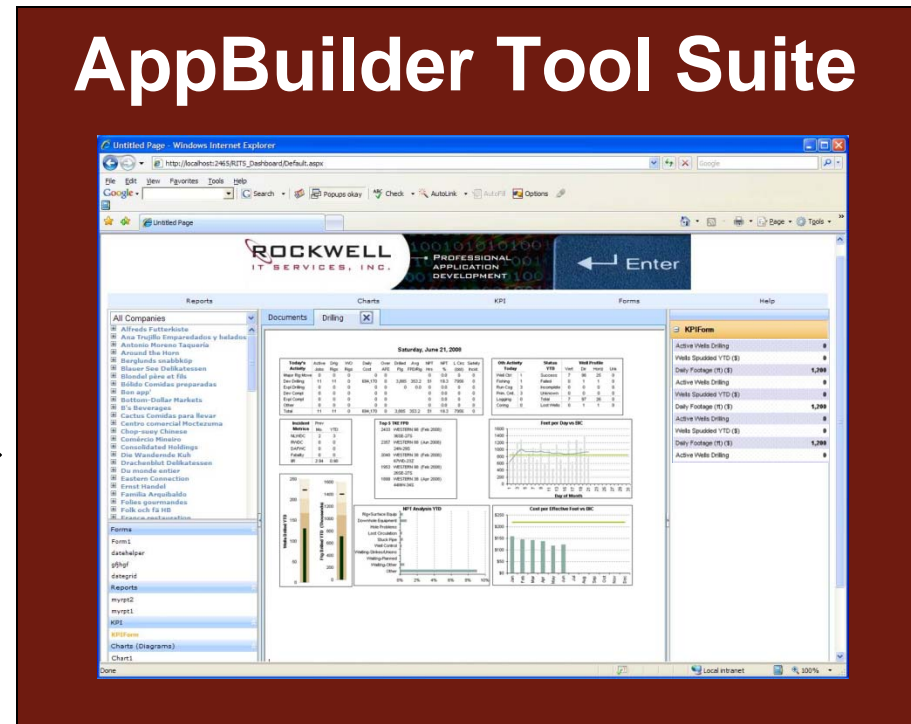


The AppBuilder Niche Market

Oil & Gas Workflows:



- ✓ Oil & Gas Asset Teams
- ✓ Integrating best-of-breed oil & gas project databases
- ✓ Technical Data

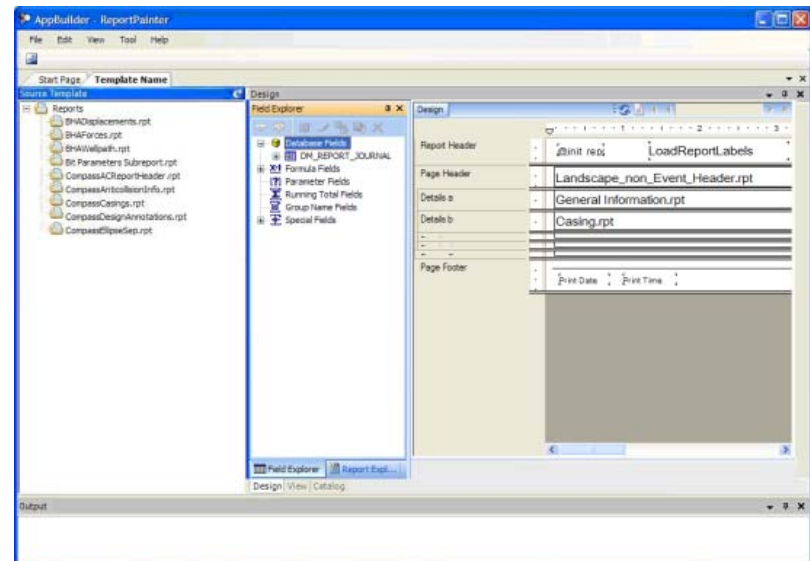


The AppBuilder Tool Suite enables consolidated enterprise access to Oil & Gas project databases

AppBuilder Report Painter

Report Features

- Uses Crystal Reports a best-of-breed report writer
- Advanced report publishing enables automated generation and distribution of output reports
- Ad-hoc Report Generation



AppBuilder Web – Map View (uses Microsoft Virtual Earth)

The screenshot displays a web browser window titled "Untitled Page - Windows Internet Explorer" with the address bar showing "http://localhost:2465/RITS_Dashboard/Default.aspx". The page features a header for "ROCKWELL IT SERVICES, INC." with the tagline "PROFESSIONAL APPLICATION DEVELOPMENT" and a blue "Enter" button. Below the header is a navigation bar with "File", "Tools", "Options", "Help", and "Logout".

The main content area is divided into two sections. On the left is a sidebar titled "All Companies" with a scrollable list of company names such as "Alfreds Futterkiste", "Ana Trujillo Emparedados y helados", and "Ernst Handel". Below this is a "Forms" section with a list of form names including "updateui", "CustomerForm", "datehelper", "datagrid", "testsum", "daterange", "Reports", "EmployeeProfile", "CustomerList", and "Top5Products".

The right section is titled "Base Map" and "Documents" and contains a map from Microsoft Virtual Earth. The map shows a world view with three red location pins. A popup window is open over one of the pins, displaying the following information:

- PinID:6**
- Latitude:0.42954
- Longitude:76.5616
- Reports :
 - [Report 1](#)
 - [Report 2](#)
 - [Report 3](#)
- Charts :
 - [Chart 1](#)
 - [Chart 2](#)
 - [Chart 3](#)
- [Show Documents...](#)

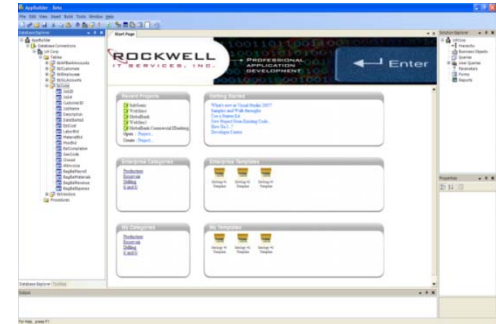
A scale bar at the bottom right of the map indicates "6000 miles".

At the bottom of the browser window, the status bar shows "Local intranet" and "100%".

Access Reports, Charts and Documents directly from base map

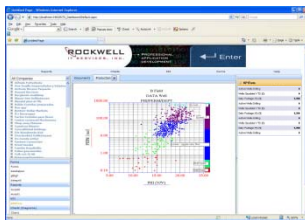
AppBuilder Solutions Platform

Enterprise Business Model



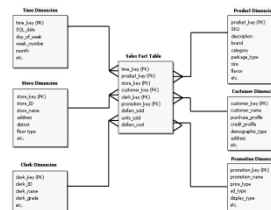
Presentation Layer

- User Defined
- Dashboards
- KPIs
- Reports, Forms
- Object/Entity Browser
- Web-enabled



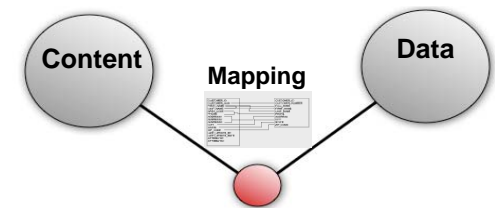
Business Model Layer

- Multiple Data Sources
- Mapping
- Hierarchies
- Agg & Data roll ups
- Measures / Calculations
- Seamless data transfer



ECM Layer

- Enterprise Content
- Smart doc searches



Contact Information

Marcus Rockwell, CEO

281-385-9025

mrockwell@rockwellits.com

www.rockwellits.com

Rockwell IT Services, Inc.