

Companies need the ability to easily transform their data and documents into meaningful and actionable information. RockwellIT's AppBuilder Tool Suite is specifically designed to be a business integration platform that facilitates a step-change integration of both data and documents across applications. This fuller integration of data and documents within the company's enterprise will help to create an information environment that fuels fact-based decision making.

AppBuilder is designed for use by executives, managers, business analyst, information specialist, system administrators and Business Intelligence specialists, but makes data and documents accessible

to any business user in the customer's organization. AppBuilder, with its extensible architecture enables connectivity between applications and sets of data/documents that are located across disparate systems. Disparate systems contain sets of data that are from separate systems, stored in different locations, and saved in a variety of formats.

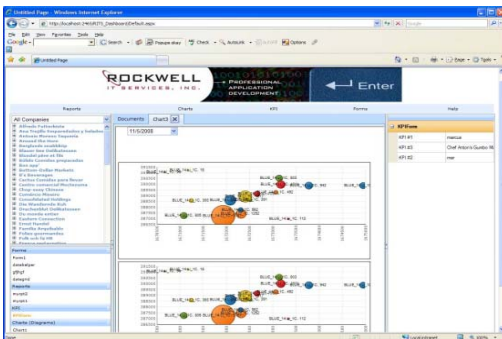
AppBuilder provides a seamless mechanism for visualizing or transferring data and documents from disparate data and content sources.

Also, AppBuilder is designed to help companies integrate these disparate databases more easily and cost effectively than with other tools and approaches, like data warehouses.

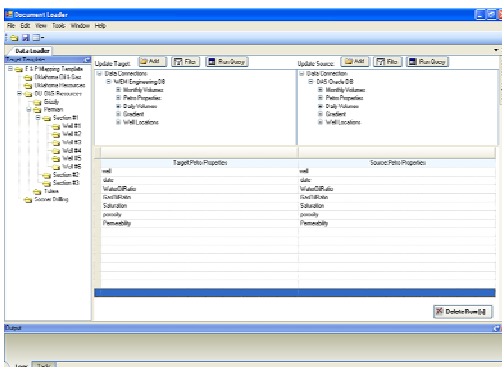
AppBuilder Template Generator



AppBuilder Web Painter



AppBuilder DataLoader



AppBuilder Tool Suite

The AppBuilder Tool Suite is an enterprise integration framework and was designed from the ground up to help our users maximize the return on their information investment. Whether it's reporting; or the need for fast access to reliable information about key performance indicators; or dashboards; or transferring common data between different databases; or intelligent document search, AppBuilder provides a modern architecture, flexibility and extensibility to meet all these user requirements.

Design Tool

This tool will allow users to connect to one or more different ODBC-aware databases and define business objects. AppBuilder business objects are created by reading source databases and defining database mapping information. This mapping determines how to both retrieve and update data from the respective data source(s). Also, the Design Tool will allow the user to define a hierarchy tree or object explorer which can be used to browse the data coming from the selected data sources. Furthermore, the Design Tool also has built-in presentation modules for creating user interface (UI) layouts. The database mapping, object browser hierarchy and the UI presentation information are all used to define the AppBuilder template. The resulting template is loaded as input by other AppBuilder tools in the suite to transfer data or render user interfaces on the Windows desktop, over the web or on web-enabled mobile devices.

Data Visualization

The AppBuilder Web Painter creates an operational web site that provides users with secure, immediate access to user defined reports, KPI's, dashboards and document search capability. The Web Painter will read the related template file and render the web site by populating the UI components using data retrieved via the business objects. The web site will feature visually appealing, feature-rich Web pages that are completely user configurable, customizable and ready-to-deploy.

Data Transfer

The Data Loader module is used to map business objects defined in one template with business object defined in another template. Typically a person with an administrative role would use this module to define the mappings. Once the project has been created other users can then use the module and related mapping file to facilitate a data transfer from one or more source databases to select target databases. Data loader transfer jobs can be initiated manually by the user or may be scheduled to run in the future.

AppBuilder Enterprise Solution Cost Effective Data Integration For your IT Ecosystem

- **Access to multiple databases**

Data is accessed from wherever it resides on the network without requiring the time-consuming and technically-intensive work of first copying the data to a new location. This allows asset teams to quickly retrieve large amounts of information from various data sources in real time.

- **Improved Workflow Efficiency**

Reduces decision-making cycle time and adds value for technical teams through interactive dashboards, reports and ready access to relevant documents.

- **Flexibility / Adaptable to Change**

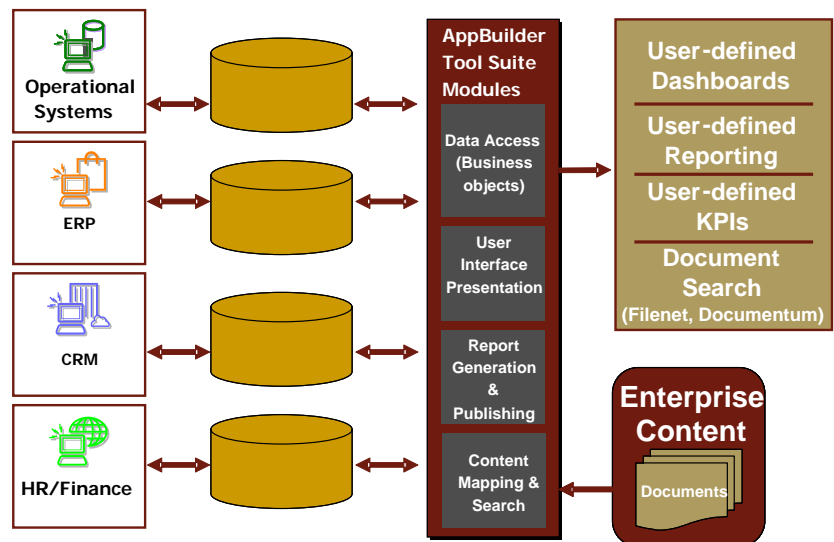
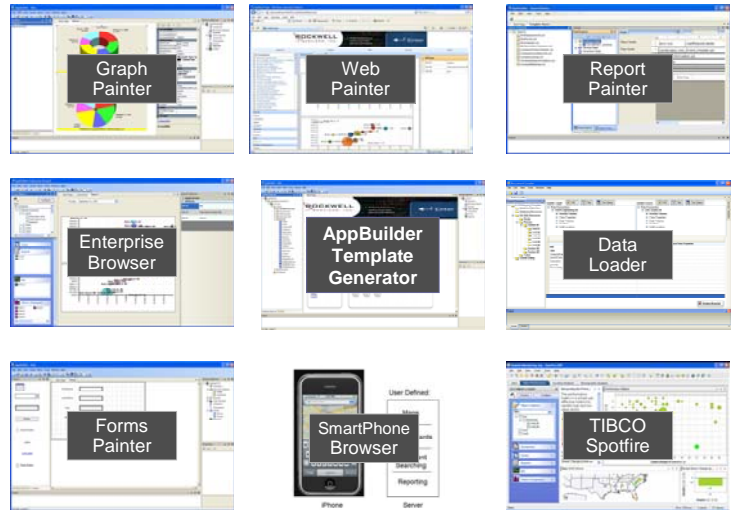
Able to quickly change or add new dashboards, reports, and Key Performance Indicators to support rapidly changing business requirements. AppBuilder can be tailored to provide a custom fit to the way any organization does business

- **Cost-effective implementation**

AppBuilder provides standard templates that can be customized or allows users to create their own templates from scratch. These templates can be deployed in days and weeks, rather than months, and require little to no training to use.

- **Bridging the data and document divide**

Providing business users with a contextual framework which allows them to link enterprise data to enterprise content



Applications	Oil & Gas, CRM, SharePoint, Legacy & Niche, Analytics, and many, many more
Document Repositories	Documentum, Filenet, SharePoint, Project databases, and more
Data Stores	SQL Server, Oracle, IBM DB2, Sybase, Informix, MySQL, Microsoft Access, Microsoft Excel, and many more!

Requirements

Operating System	Windows Server 2000/2003, Windows XP
Framework	Microsoft .NET 2.0